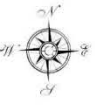


Colorado River Water Supply Report

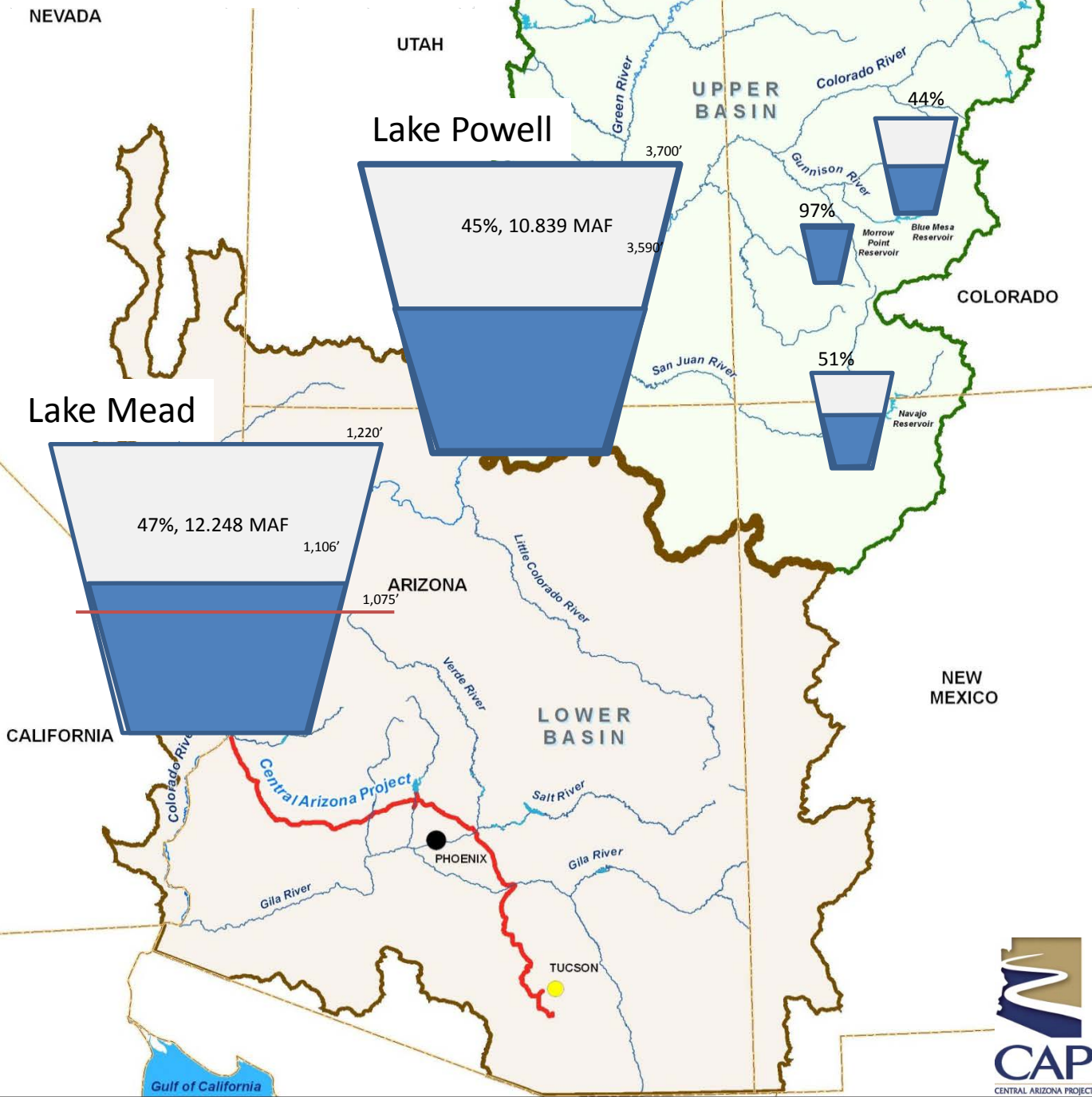
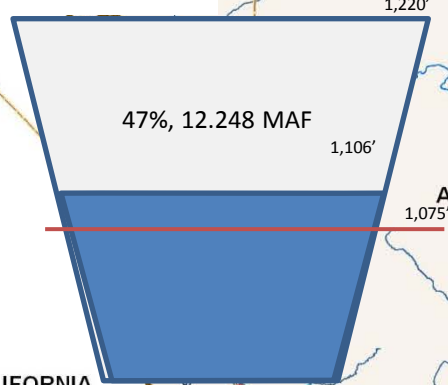
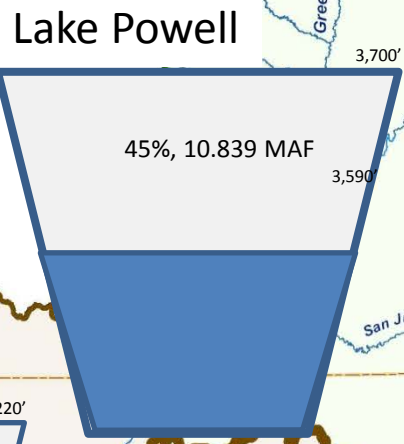
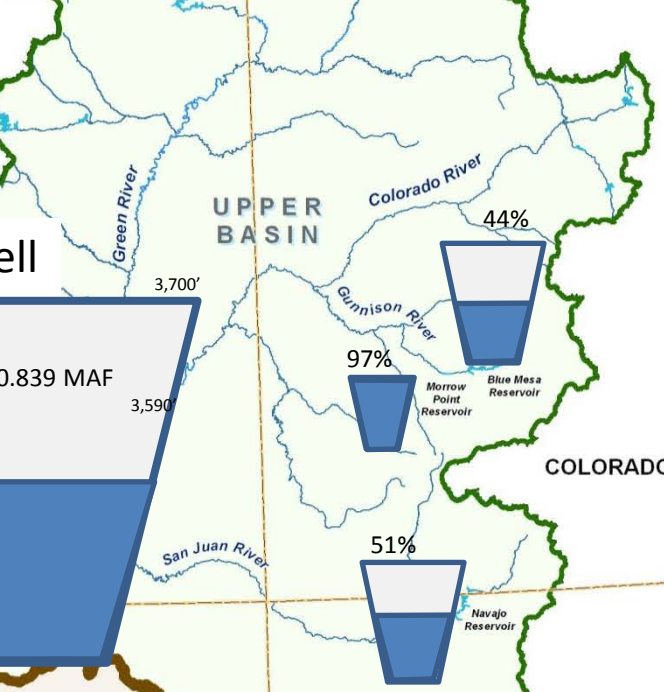
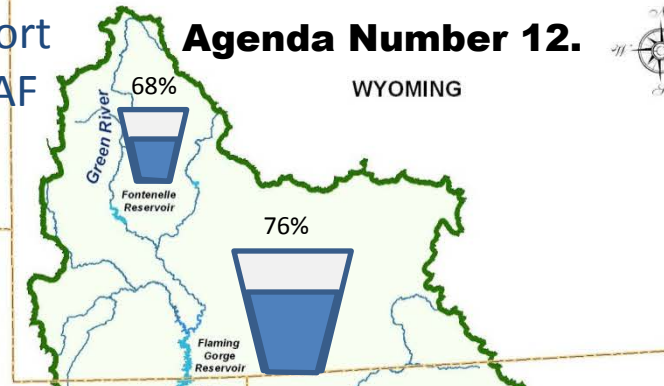
Total System Contents: 27.507 MAF

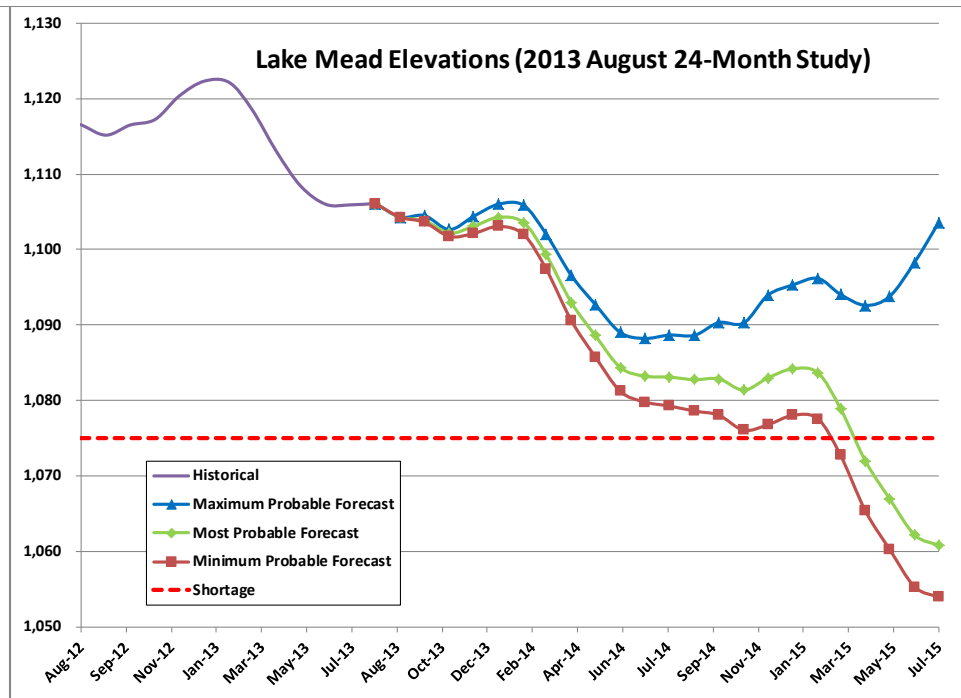
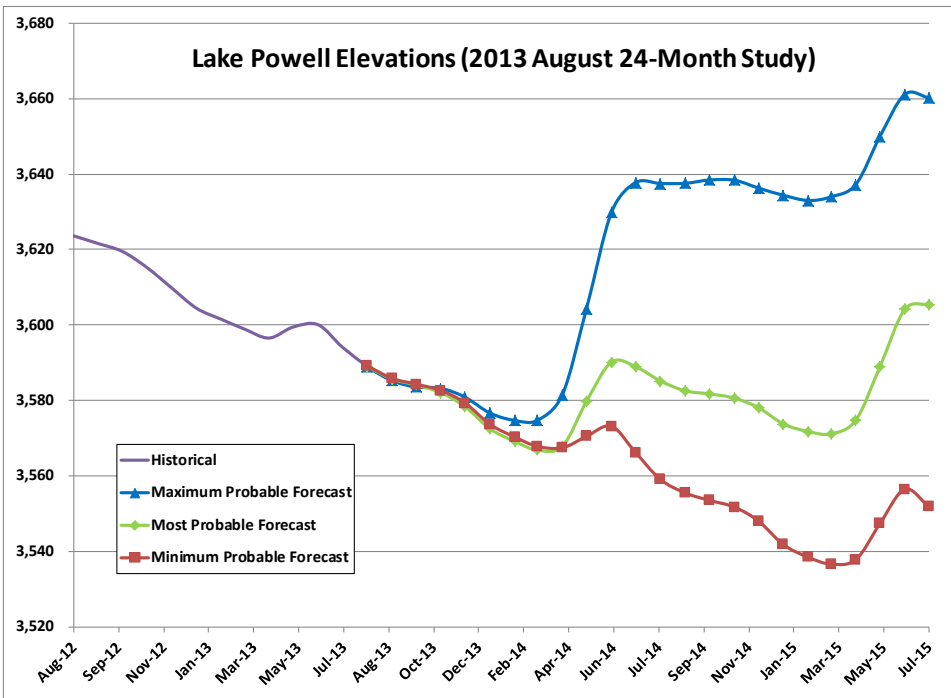
8/26/13

Agenda Number 12.



Reservoir Capacities (MAF)			
Reservoir	Current	Change	Maximum
Lake Mead	12.25	+ 0.02	25.90
Lake Powell	10.84	- 0.55	24.30
Flaming Gorge Reservoir	2.84	- 0.05	3.75
Navajo Reservoir	0.86	- 0.05	1.70
Blue Mesa Reservoir	0.37	- 0.03	0.83
Fontenelle Reservoir	0.23	- 0.01	0.34
Morrow Point Reservoir	0.11	0.00	0.12

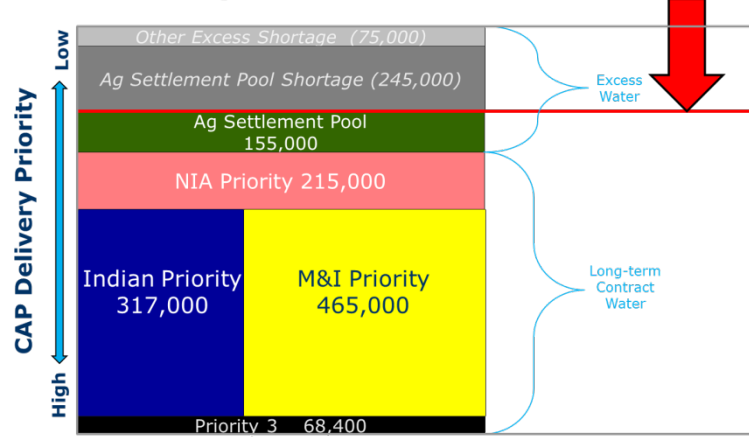




The August 2013 24-Month study projected that with an annual release of 8.23 MAF (as was consistent in water year 2013), the January 1st elevation of Lake Powell would be 3,574 ft, which is less than 3,575 ft and places Lake Powell in the mid-elevation release tier. Since Lake Mead is not below 1,025 ft, according to the 2007 Interim Guidelines, under this operational tier annual releases from Lake Powell to Lake Mead will be reduced to 7.48 MAF (for water year 2014).

According to the August 2013 24-Month study, Lake Mead elevation in July 2015 under the most probable inflow forecast is 1,061 ft. If Lake Mead forecasted elevations remain below 1,075 ft by January 1st of 2016 (per the August 24-month study of 2015), then according to the 2007 Interim Guidelines a Lower Basin shortage would be declared for 2016. According to this, the earliest likelihood of Colorado River shortage for Arizona would be 2016.

Level 1 Shortage Impact on 2016 Projected CAP Demand



Based on a potential shortage in 2016, impacts to CAP projected demand in 2016 would include a 320 KAF reduction to CAP. All excess water uses except the Ag settlement pool would be eliminated, and the Ag settlement pool would be significantly reduced.